

varkiza sea view







a gateway of gold



The entranceway to paradise has been imagined in many ways, but now we see the truth: it's made of gold. The Greece Golden Visa is among the best in the world, allowing you to claim residency for your entire family simply by investing in Greek real estate. There is no minimum stay required, and includes yourself, your spouse, all children under the age of 21, and your parents, making it truly your golden gateway to the world.

#### **The Greece Golden Visa:**

- Greek residency when you invest in Greek real estate
- Valid for as long as you own your property
- No minimum stay required
- Includes partner, parents, and children under the age of 21





refinement refined

Seaview Varkiza offers seven beautifully modern, indulgent apartments and three luxury, premier penthouses overlooking the spectacular Mediterranean Sea and breathtaking mountains. Each unit's living space has been thoughtfully designed for maximum elegance and comfort by expert architects who have refined the art of refinement. If you're looking for a stunning seaview, a vibrant city, or both, browse our offerings to find the home of your dreams. Every unit in the building is designed to offer you the maximum comfort and a greater return on your investment.

*With the inspiration of the ages in the air, why settle for anything less than perfect?*





investment opportunities

## SEAVIEW VARKIZA BUILDING

- Plot area: 800m<sup>2</sup>
- Building Energy Efficiency: B+ (KENAK)
- Heating: Individual heat pumps by LG or other (per property)
- Underfloor or radiator heating: REHAU
- Cooling (and heating): VRV LG (wall)
- Pre-engineered 120mm Oak wooden floor for kitchen, living, bedrooms
- Elevator, Ground level Parking, Basement storage





## GROUND FLOOR GARDEN APARTMENT

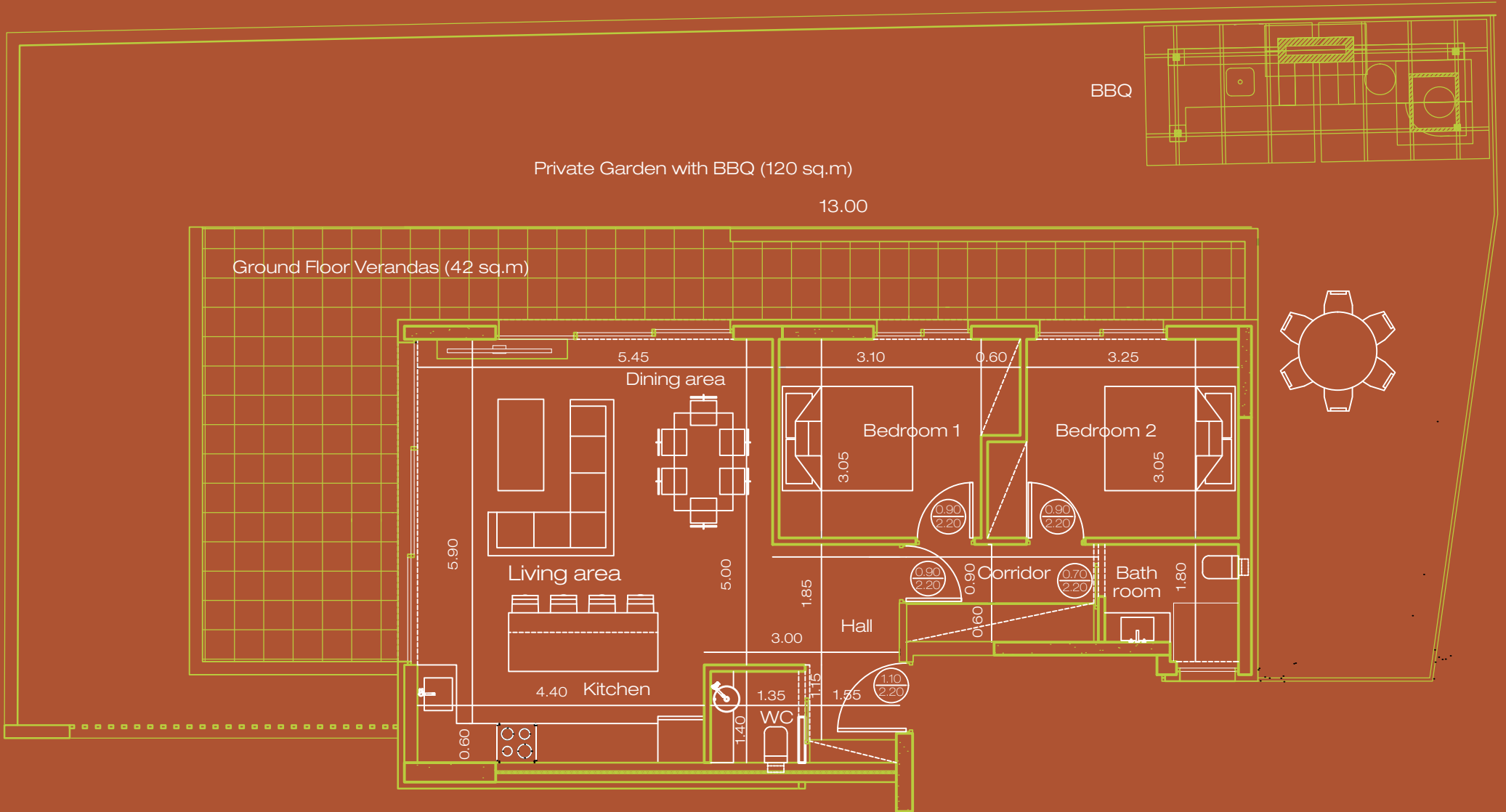
This ground floor apartment unit includes two standard size bedrooms, one full bathroom and one water closet and a spacious open plan full kitchen - living room area. Additionally the apartment enjoys a private Garden, and BBQ - lounge areas.

- North East facing
- Area: 90m<sup>2</sup>
- Private Garden with BBQ: 120m<sup>2</sup>
- Veranda: 42.5m<sup>2</sup>
- Two bedrooms
- One full bathroom with shower, one guest bathroom
- Open plan kitchen with 2.3m island including oven, microwave, induction cooker, fridge
- Ground level parking area
- Basement storage area: 4m<sup>2</sup>
- MDF kitchen and closets with Blum mechanisms and HDF counter
- Kavala or equivalent marble bathrooms

**400 000€**







GROUND FLOOR GARDEN APARTMENT PLAN



## FIRST FLOOR SUITE NORTH EAST

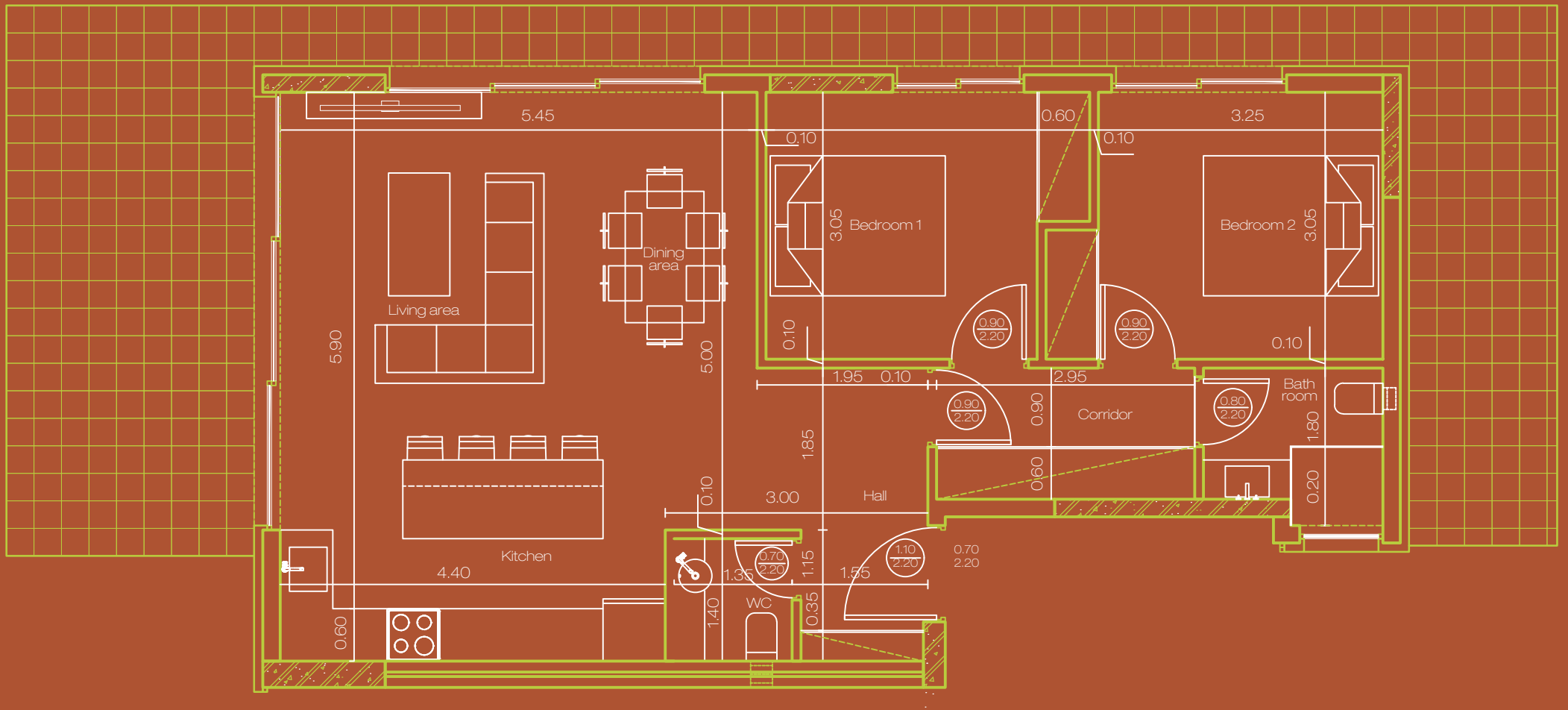
This second floor apartment unit includes two standard size bedrooms, one full bathroom and one water closet and a spacious open plan full kitchen - living room area.

- Area: 100m<sup>2</sup>
- Two bedrooms
- One full bathroom with shower, one guest bathroom
- Open plan kitchen with 2.3m island including oven, microwave, induction cooker, fridge
- Balcony: 25m<sup>2</sup>
- Elevator Access
- Ground level parking area
- Basement storage area: 4m<sup>2</sup>
- MDF kitchen and closets with Blum mechanisms and HDF counter
- Kavala or equivalent marble bathrooms

**380 000€**







FIRST FLOOR SUITE NORTH EAST PLAN



## FIRST FLOOR SUITE NORTH WEST

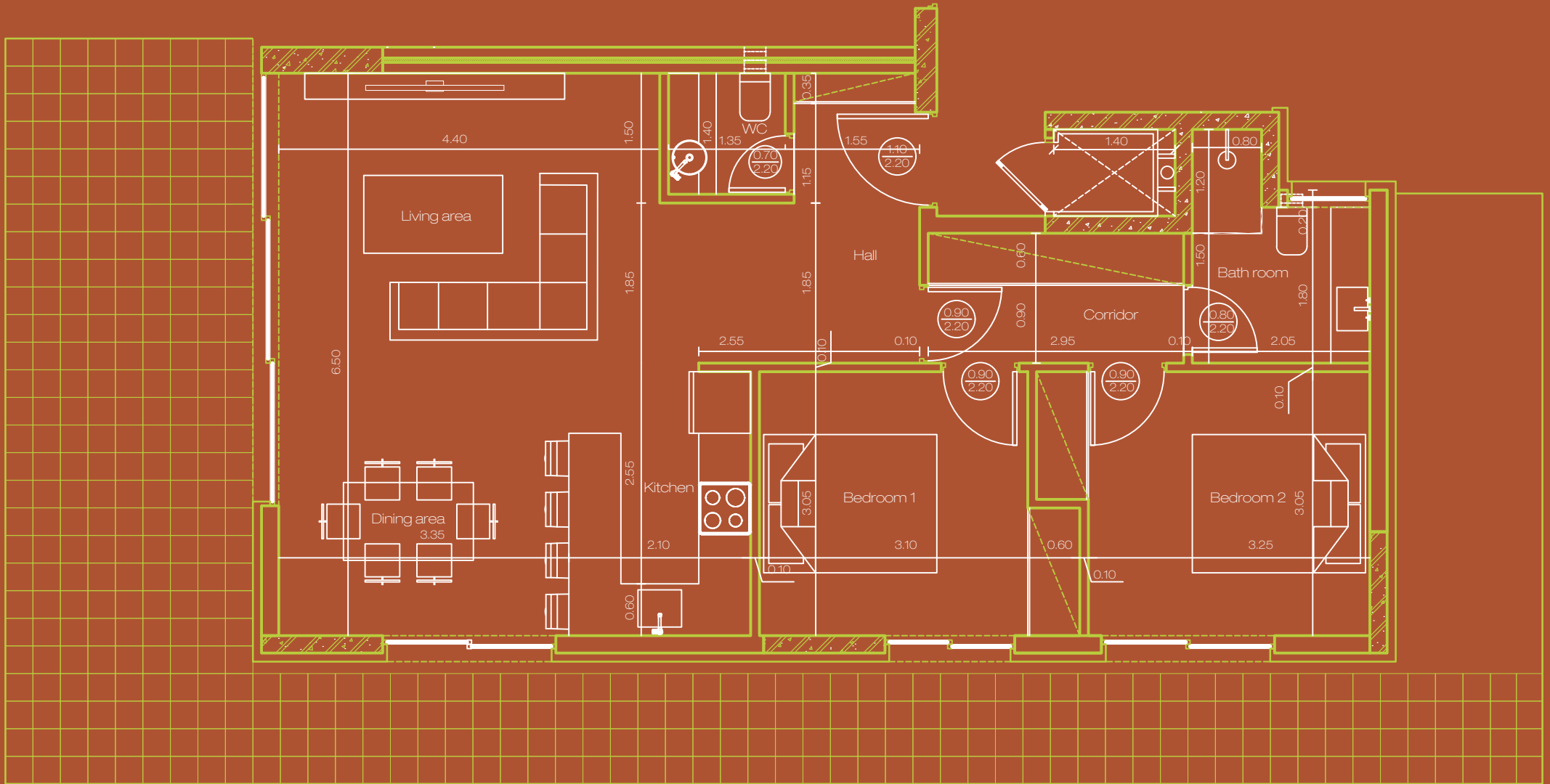
This ground floor apartment unit includes two standard size bedrooms, one full bathroom and one water closet and a spacious open plan full kitchen - living room area. Additionally the apartment enjoys a private Garden, and BBQ - lounge areas.

- Area: 95m<sup>2</sup>
- Two bedrooms
- One full bathroom with shower, One guest bathroom
- Open plan kitchen with 2.3m island including oven, microwave, induction cooker, fridge
- Balcony: 45m<sup>2</sup>
- Elevator Access
- Ground level parking area
- Basement storage area: 4m<sup>2</sup>
- MDF kitchen and closets with Blum mechanisms and HDF counter
- Kavala or equivalent marble bathrooms

**361 000€**







FIRST FLOOR SUITE NORTH WEST PLAN



## SECOND FLOOR SUITE NORTH EAST

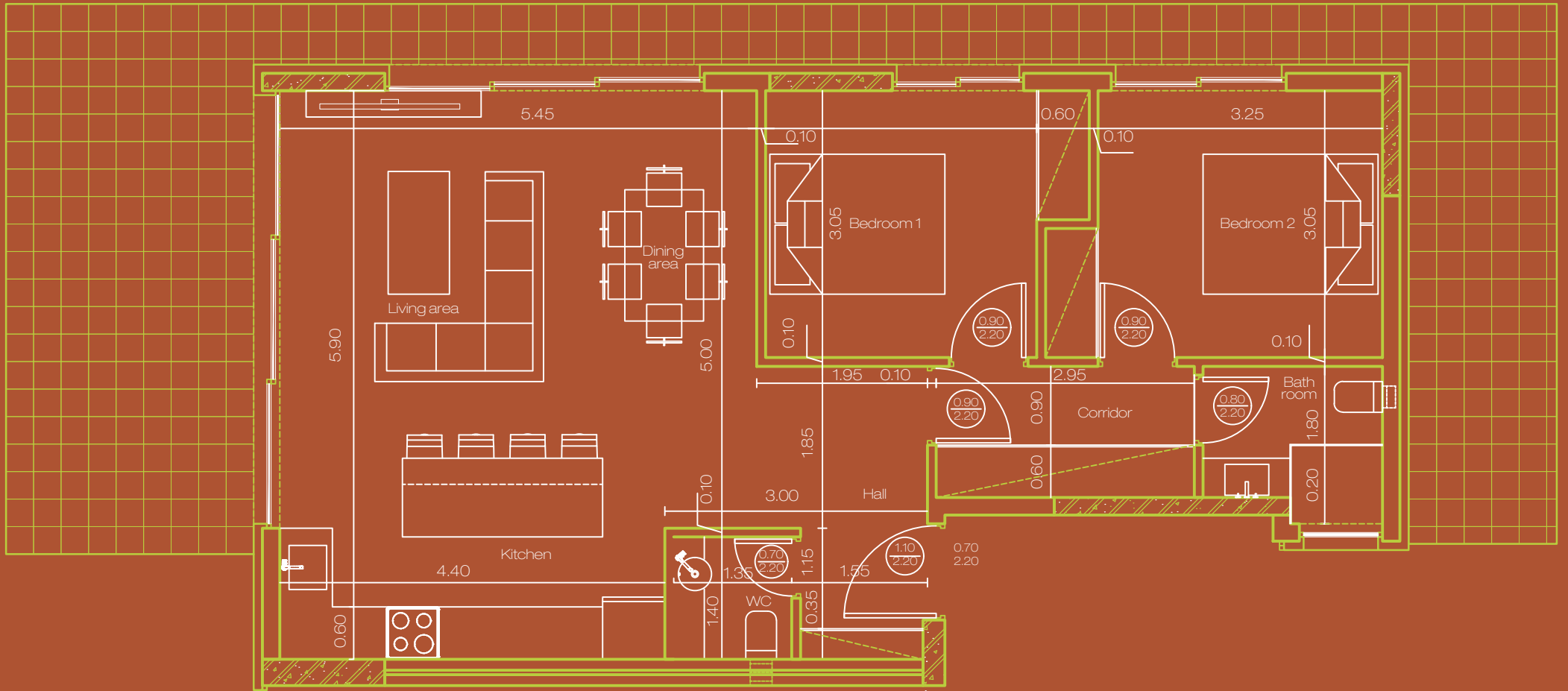
This second floor apartment unit includes two standard size bedrooms, one full bathroom and one water closet and a spacious open plan full kitchen - living room area.

- Area: 90m<sup>2</sup>
- Two bedrooms
- One full bathroom with shower, one guest bathroom
- Open plan kitchen with 2.3m island including oven, microwave, induction cooker, fridge
- Balcony: 41.48m<sup>2</sup>
- Elevator Access
- Ground level parking area
- Basement storage area: 4m<sup>2</sup>
- MDF kitchen and closets with Blum mechanisms and HDF counter
- Kavala or equivalent marble bathrooms
- Ideal Standard sanitary appliances and taps
- Security apartment door with inbuilt armor

**360 000€**







SECOND FLOOR SUITE NORTH EAST PLAN

## SECOND FLOOR SUITE NORTH WEST

This second floor apartment unit includes two standard size bedrooms, one full bathroom and one water closet and a spacious open plan full kitchen - living room area.

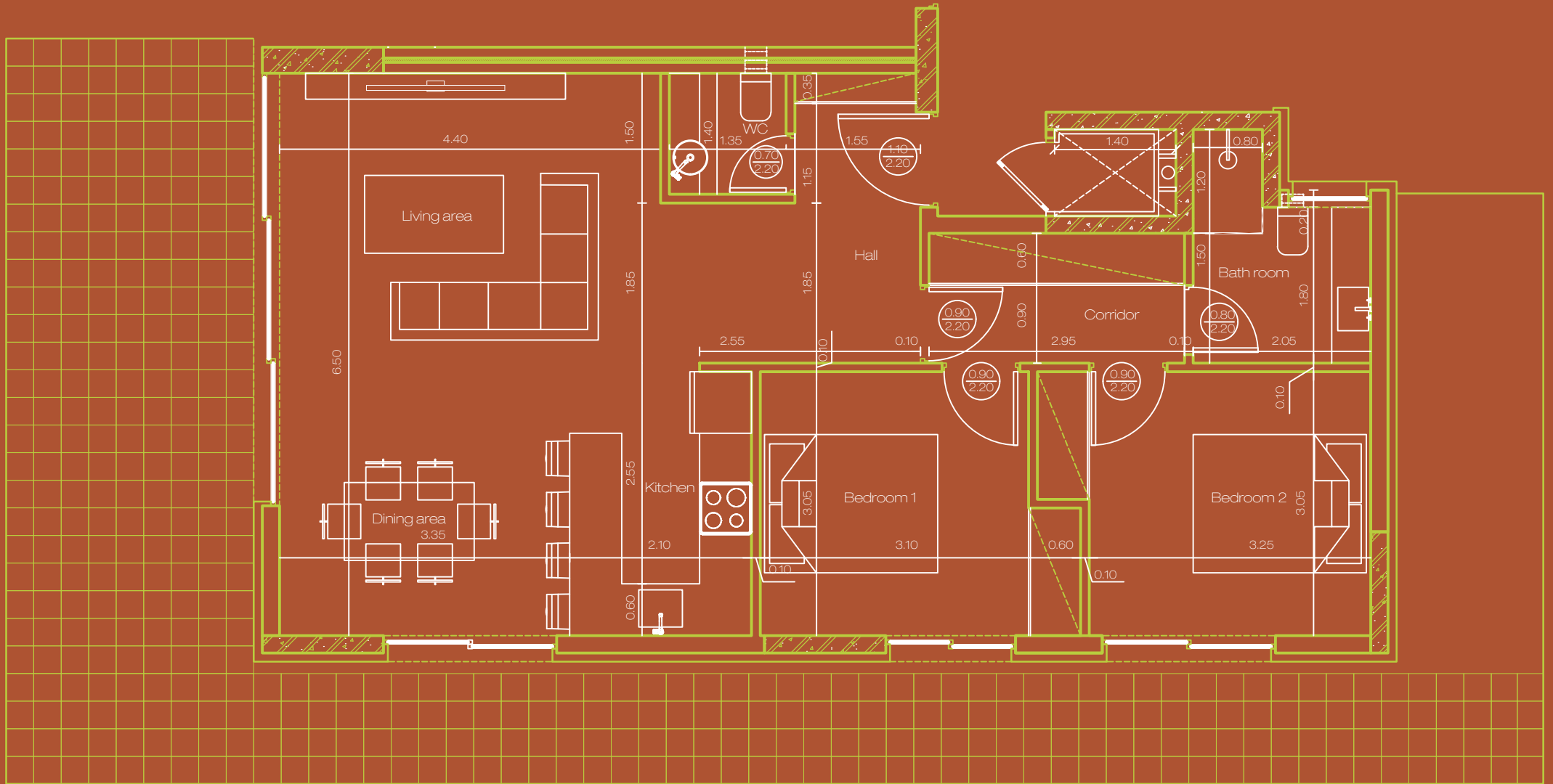
- Area: 83m<sup>2</sup>
- Two bedrooms
- One full bathroom with shower, one guest bathroom
- Open plan kitchen with 2.3m island including oven, microwave, induction cooker, fridge
- Balcony: 60m<sup>2</sup>
- Elevator Access
- Ground level parking area
- Basement storage area: 4m<sup>2</sup>
- MDF kitchen and closets with Blum mechanisms and HDF counter
- Kavala or equivalent marble bathrooms
- Ideal Standard sanitary appliances and taps
- Security apartment door with inbuilt armor

**332 000€**









SECOND FLOOR SUITE NORTH WEST PLAN

## THIRD FLOOR SUITE NORTH EAST

This third floor apartment unit includes two standard size bedrooms, one full bathroom and one water closet and a spacious open plan full kitchen - living room area.

- Area: 90m<sup>2</sup>
- Two bedrooms
- One full bathroom with shower, one guest bathroom
- Open plan kitchen with 2.3m island including oven, microwave, induction cooker, fridge
- Balcony: 41.48m<sup>2</sup>
- Elevator Access
- Ground level parking area
- Basement storage area: 4m<sup>2</sup>
- MDF kitchen and closets with Blum mechanisms and HDF counter
- Kavala or equivalent marble bathrooms
- Ideal Standard sanitary appliances and taps
- Security apartment door with inbuilt armor

**440 000€**

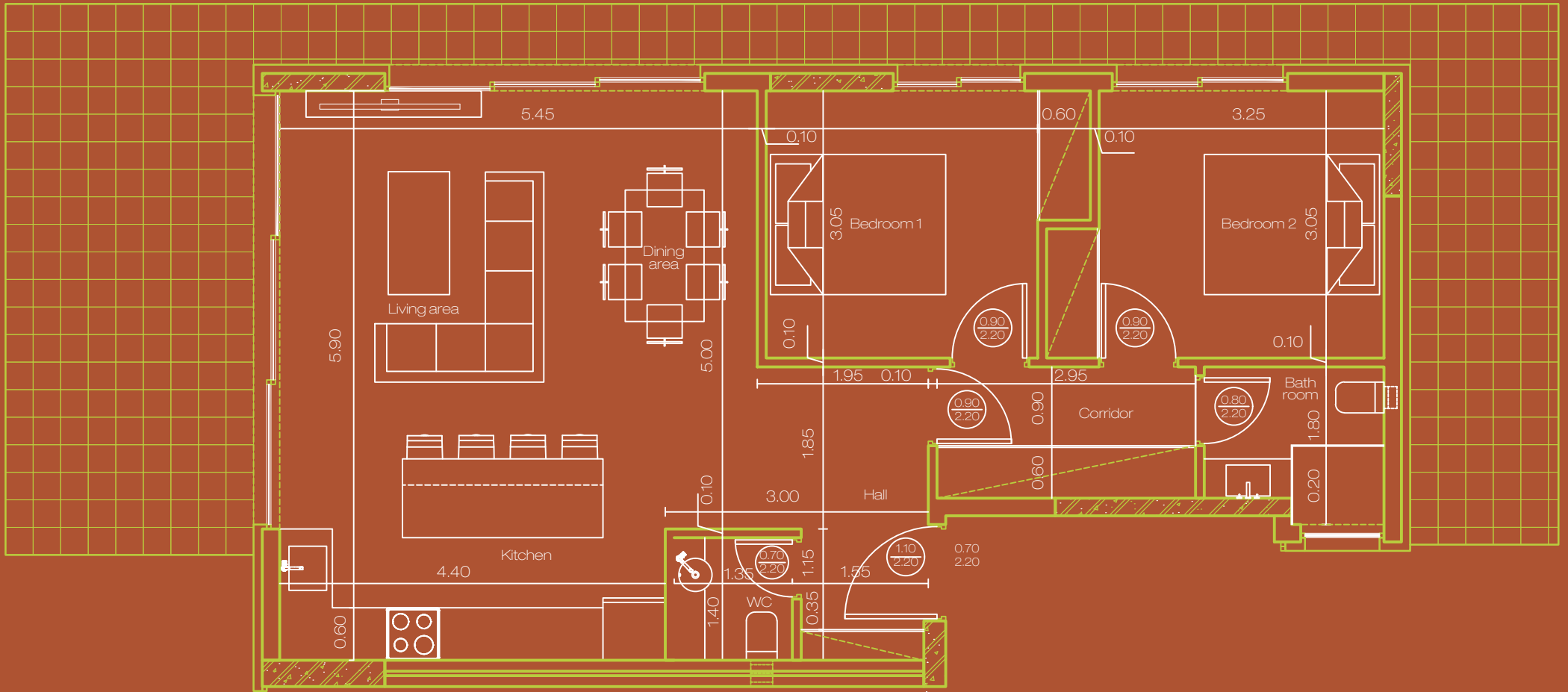




Miele

1 2 3 15 5 15





THIRD FLOOR SUITE NORTH EAST PLAN

## THIRD FLOOR SUITE NORTH WEST

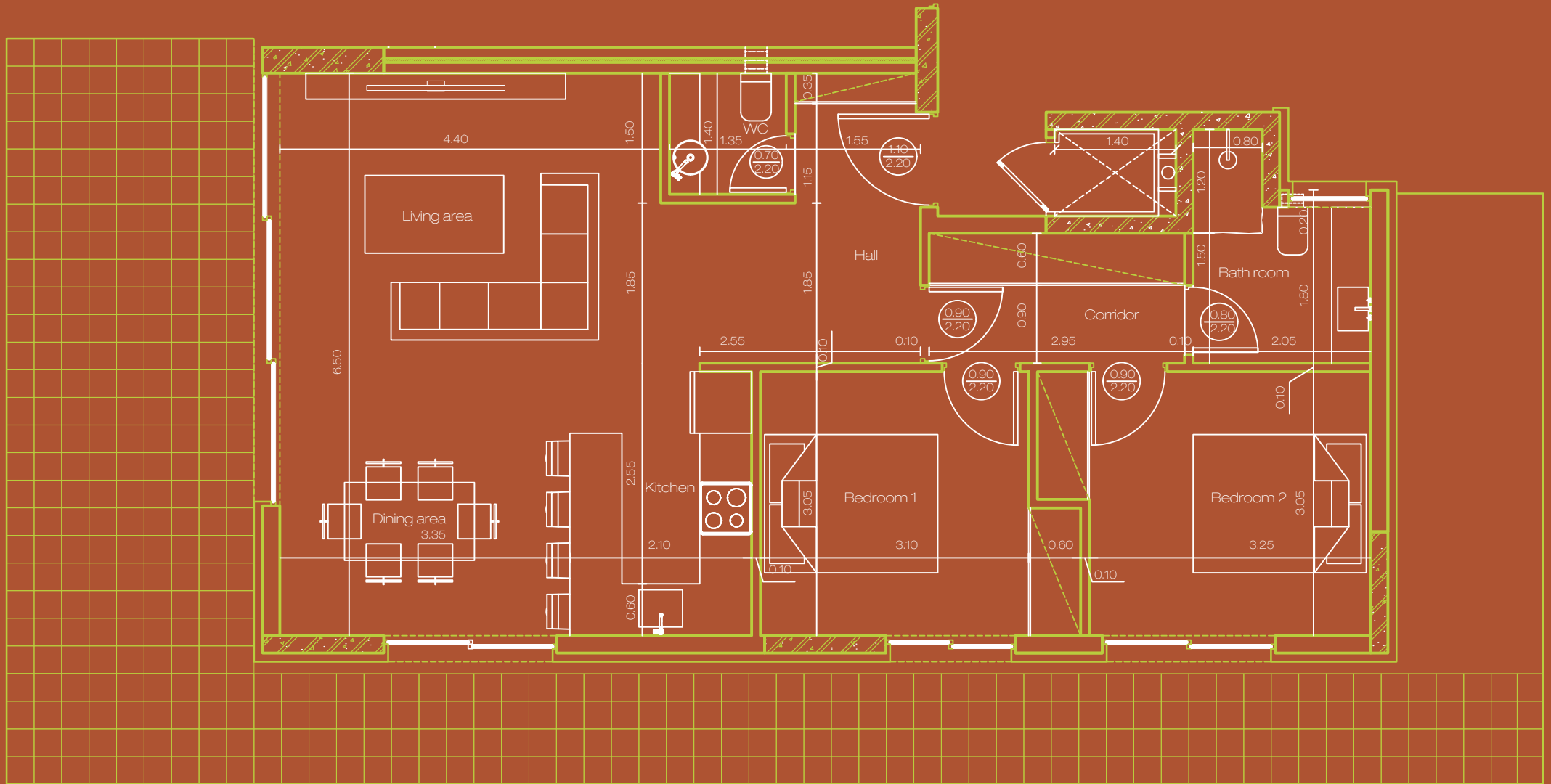
This third floor apartment unit includes two standard size bedrooms, one full bathroom and one water closet and a spacious open plan full kitchen - living room area.

- Area: 83m<sup>2</sup>
- Two bedrooms
- One full bathroom with shower, one guest bathroom
- Open plan kitchen with 2.3m island including oven, microwave, induction cooker, fridge
- Balcony: 60m<sup>2</sup>
- Elevator Access
- Ground level parking area
- Basement storage area: 4m<sup>2</sup>
- MDF kitchen and closets with Blum mechanisms and HDF counter
- Kavala or equivalent marble bathrooms
- Ideal Standard sanitary appliances and taps
- Security apartment door with inbuilt armor

**400 000€**







THIRD FLOOR SUITE NORTH WEST PLAN



## FORTH FLOOR SUITE NORTH EAST

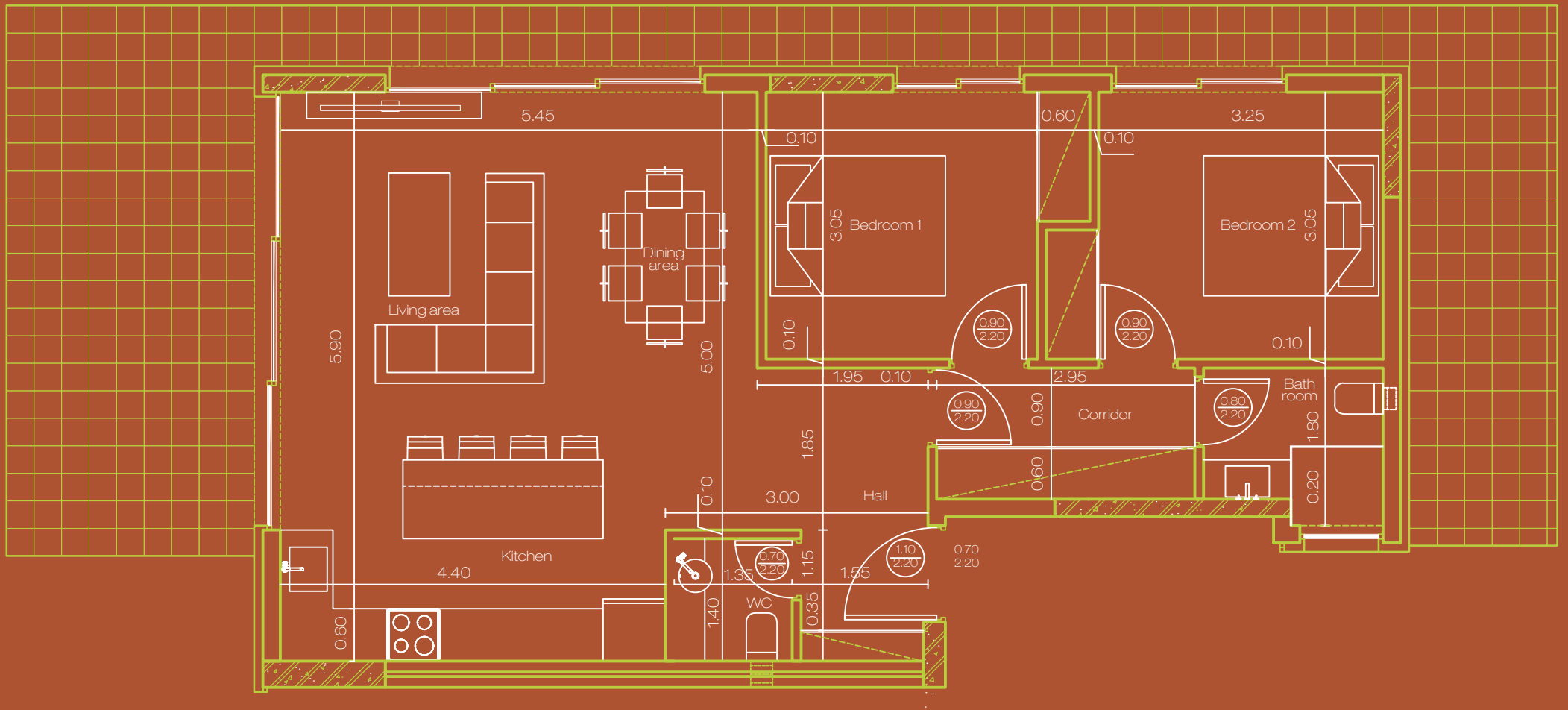
This fourth floor apartment unit includes two standard size bedrooms, one full bathroom and one water closet and a spacious open plan full kitchen - living room area.

- Area: 90m<sup>2</sup>
- Two bedrooms
- One full bathroom with shower, one guest bathroom
- Open plan kitchen with 2.3m island including oven, microwave, induction cooker, fridge
- Balcony: 41.48m<sup>2</sup>
- Elevator Access
- Ground level parking area
- Basement storage area: 4m<sup>2</sup>
- MDF kitchen and closets with Blum mechanisms and HDF counter
- Kavala or equivalent marble bathrooms
- Ideal Standard sanitary appliances and taps
- Security apartment door with inbuilt armor

**460 000€**







FORTH FLOOR SUITE NORTH EAST PLAN

## FOURTH FLOOR SUITE NORTH WEST

This third floor apartment unit includes two standard size bedrooms, one full bathroom and one water closet and a spacious open plan full kitchen - living room area.

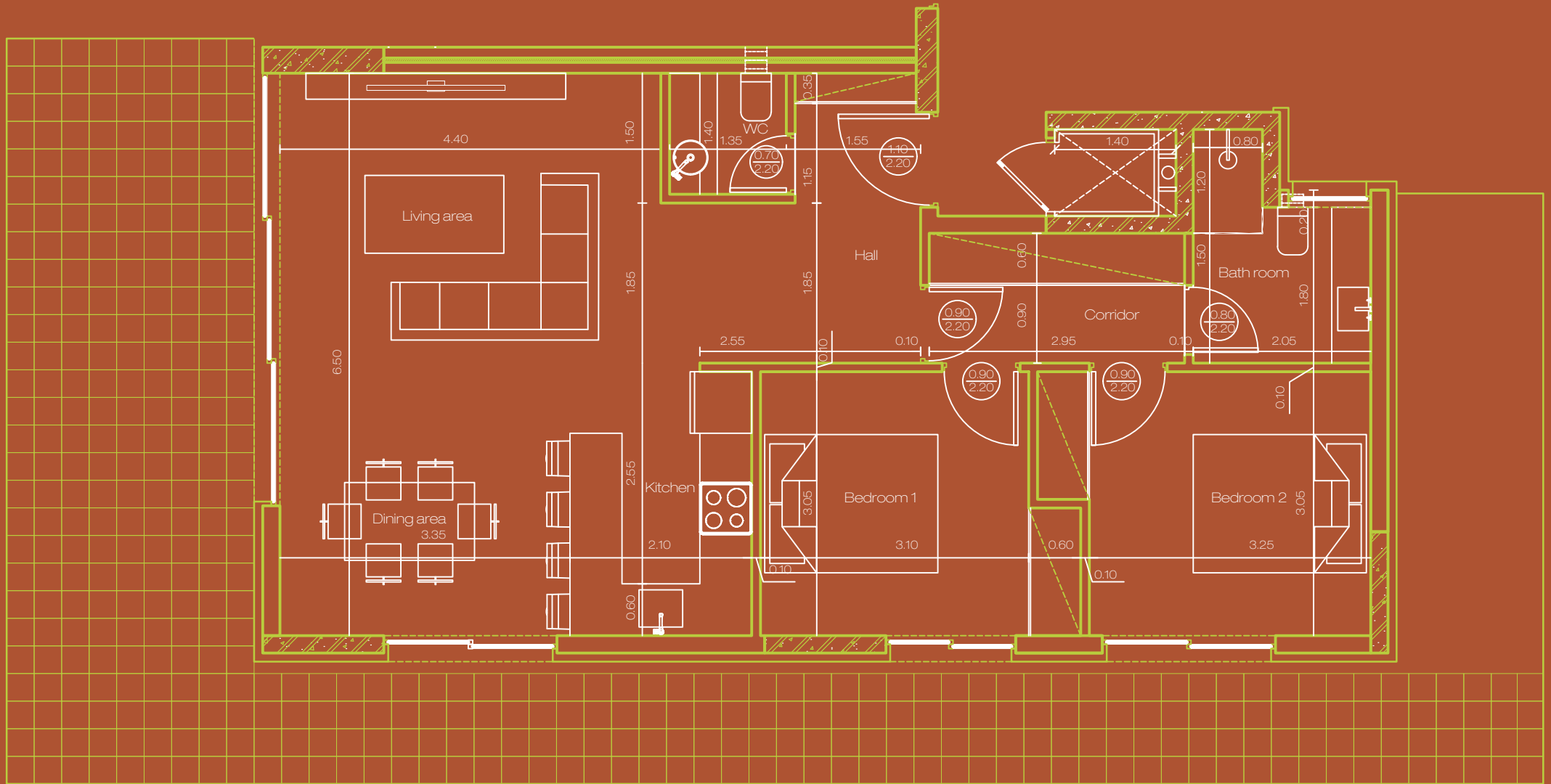
- Area: 83m<sup>2</sup>
- Two bedrooms
- One full bathroom with shower, one guest bathroom
- Open plan kitchen with 2.3m island including oven, microwave, induction cooker, fridge
- Balcony: 60m<sup>2</sup>
- Elevator Access
- Ground level parking area
- Basement storage area: 4m<sup>2</sup>
- MDF kitchen and closets with Blum mechanisms and HDF counter
- Kavala or equivalent marble bathrooms
- Ideal Standard sanitary appliances and taps
- Security apartment door with inbuilt armor

**420 000€**









FOURTH FLOOR SUITE NORTH WEST PLAN

## PENTHOUSE APARTMENT

This penthouse apartment unit includes one Master bedroom, one standard size bedroom, one full bathroom and one water closet and a spacious open plan full kitchen - living room area. Additionally the apartment enjoys a great sea view, private outdoor sun decks, and BBQ - lounge areas.

- North West facing
- Sea View
- Area: 110.00m<sup>2</sup>
- One master bedroom, one standard size bedroom
- One full bathroom with shower, one guest bathroom
- Open plan kitchen with 2.3m island including oven, microwave, induction cooker, fridge
- Private Roof: 90.00m<sup>2</sup>
- Elevator Access
- Ground level parking area
- Basement storage area: 4m<sup>2</sup>
- Lacquered kitchen and closets with Blum mechanisms and marble counter
- Villeroy & Boch sanitary appliances and tap

**600 000€**

















your dreams, our goals

where  
luxury  
begins

At OP Investments, we believe not only in the value of our properties, but in the value of individuals. Our strong ethics define who we are as a company and help us to stand out amongst other firms. Every time we make an investment in a community, we strive to add value there. We are more than a real estate company; we are your experienced partners who will welcome you at the airport and introduce you to everything you need to know about investing in Greece.

*Your Dreams are Our Goals*





[www.op-investments.com](http://www.op-investments.com)

[info@op-investments.com](mailto:info@op-investments.com)

+30 210.300.6496

  
INVESTMENTS

